

Advertisement for mobile-friendly website. It features a desktop monitor, a tablet, and a smartphone, all displaying the website. The smartphone is being held by a hand. The text on the right says: "Welcome to the MOBILE FRIENDLY VERSION OF OUR SITE" and "REQUEST A QUOTE on this item". A small note at the bottom right says: "* will not affect your desktop site viewing".



Navigation icons: a back arrow, a printer icon labeled "Print", a PDF icon labeled "PDF Adobe", and a button labeled "REQUEST A QUOTE".

Hagglund BV 206 Fire engine - MoD Ref: 50358



Hagglund BV 206 Fire Vehicle

All Terrain Emergency Response Vehicle

Choice of 2 vehicles both to the same specification to include;

Mercedes 6 cylinder turbo diesel engine

Air conditioning

Tohatsu fire system with engine driven V75 pump 2,050 L/min with foam induction system located in the rear compartment of vehicle

Roof mounted 360 degree monitor system with Akron fitting operated by remote control unit

Front water sprinkler bar

PA audio system


Sirens and LED flashing lights

Roller shutters are fitted to the front body which accommodate a retractable hose reel along with storage for layflat water hoses

The rear body has a 2,500 litre water tank and rear mounted pump unit with 4x 2.5" water suction inlets/outlets

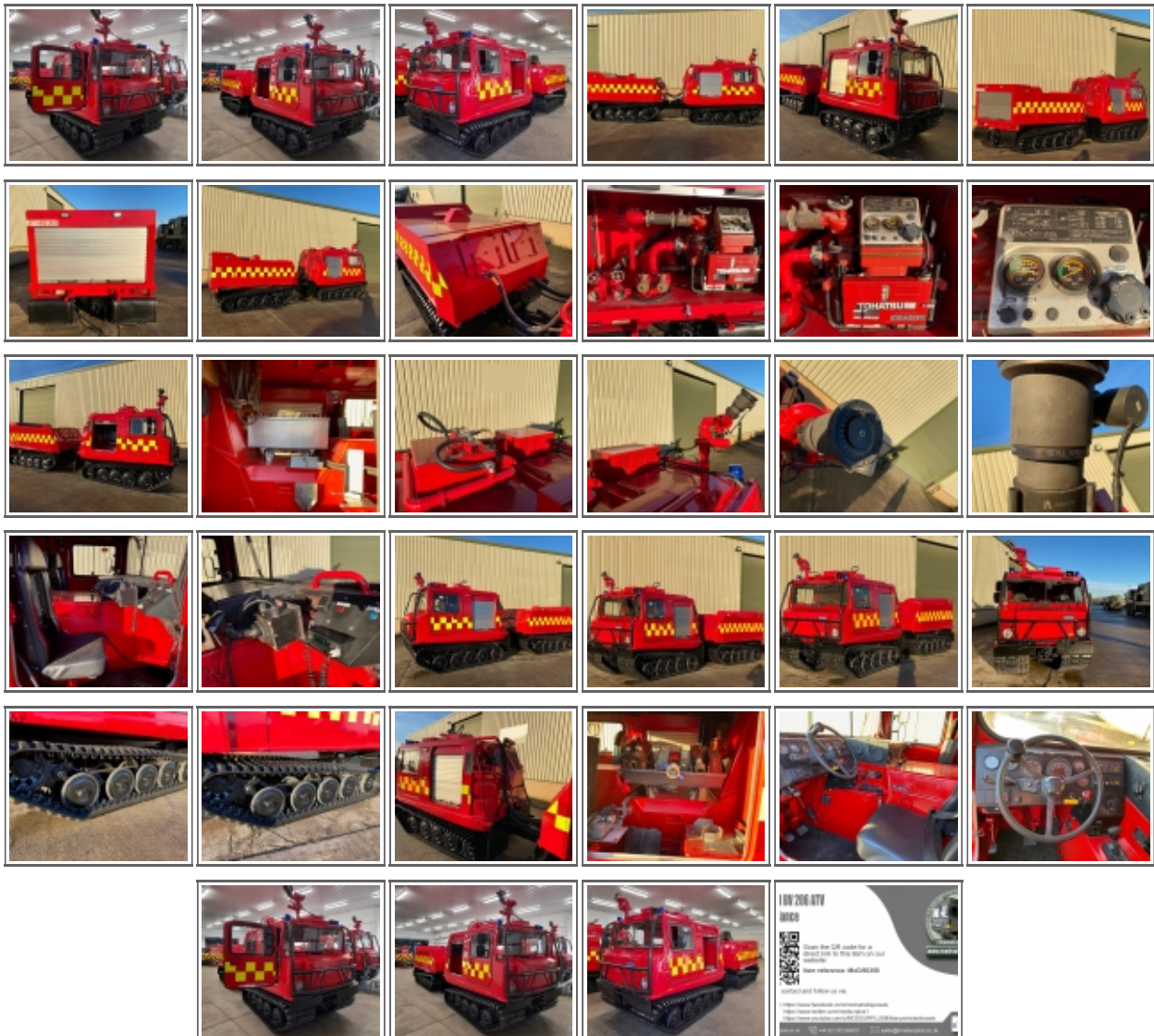
These vehicles are immediately available ex stock in excellent condition

480 & 792 working hours only

Like on Facebook	
VIDEOS (if available)	
CATEGORY	BV206 Fire Engine
MANUFACTURER	Hagglunds
ENGINE	Mercedes OM603 6 Cylinder Diesel
GEARBOX	Mercedes Auto
BRAKES	Shaft Mounted Disc
STEERING	Hydraulic Center Point Articulation
TYRES	Tracks
MAXIMUM LOAD	1500kg
ELECTRICS	24v
L x W x H	6.00m x 2.00m x 2.50m

GROSS WEIGHT	
HOURS / MILEAGE	480 - 792 Hours
DATE INTO SERVICE	1980's
YEAR OF MANUFACTURE	
QTY AVAILABLE	2
EXPORT REQUIREMENTS ...more	SIEL

Photo Gallery



All prices qoted are GBP U.K. Pounds Sterling Ex. Works excluding VAT where applicable and shipping / associated costs.

Vehicles advertised are subject to remaining unsold.

All prices quoted are based on "per individual unit" purchased, any reductions on advertised price for multiple item orders is subject to negotiation and is conducted at the time of inspection or provision of LOI.

For complete Terms & Conditions See Main Website

Photo's shown above may represent a vehicle type rather than an actual vehicle, vehicles are available serviced and painted to customers preference

An export licence may be required for items sold to customers outside of the U.K.
FOR MORE INFORMATION ON EXPORT LICENCING PROCEDURES

[CLICK HERE](#)

FOR INFORMATION ON CURRENT EU EMBARGOES

[CLICK HERE](#)

