

# MOD / NATO Disposals

ilitary vehicles and equipment for sale

[www.modsurplus.co.uk](http://www.modsurplus.co.uk)

Tel: +44 (0)1302-954007

[Return to Homepage](#) | E-Mail: [sales@modsurplus.co.uk](mailto:sales@modsurplus.co.uk)



REQUEST A QUOTE

or call us on UK +44(0)1302-954007

## Description / Ref

**MAN 27.314 6x6 Cargo Truck - 50343**

Photo (a gallery of photos is provided below - where available)



## Details

MAN 27.314 6x6 Flat bed cargo truck  
 Fitted with twist locks for 20ft containers  
 MAN 310HP 6 Cylinder engine  
 Automatic Transmission  
 Clean vehicle direct from the military with only 50,000 Kilometres

## Videos (if available)

## Category

Cargo Trucks

Length

9.00 M

## Manufacturer

MAN

Height

3.56 M

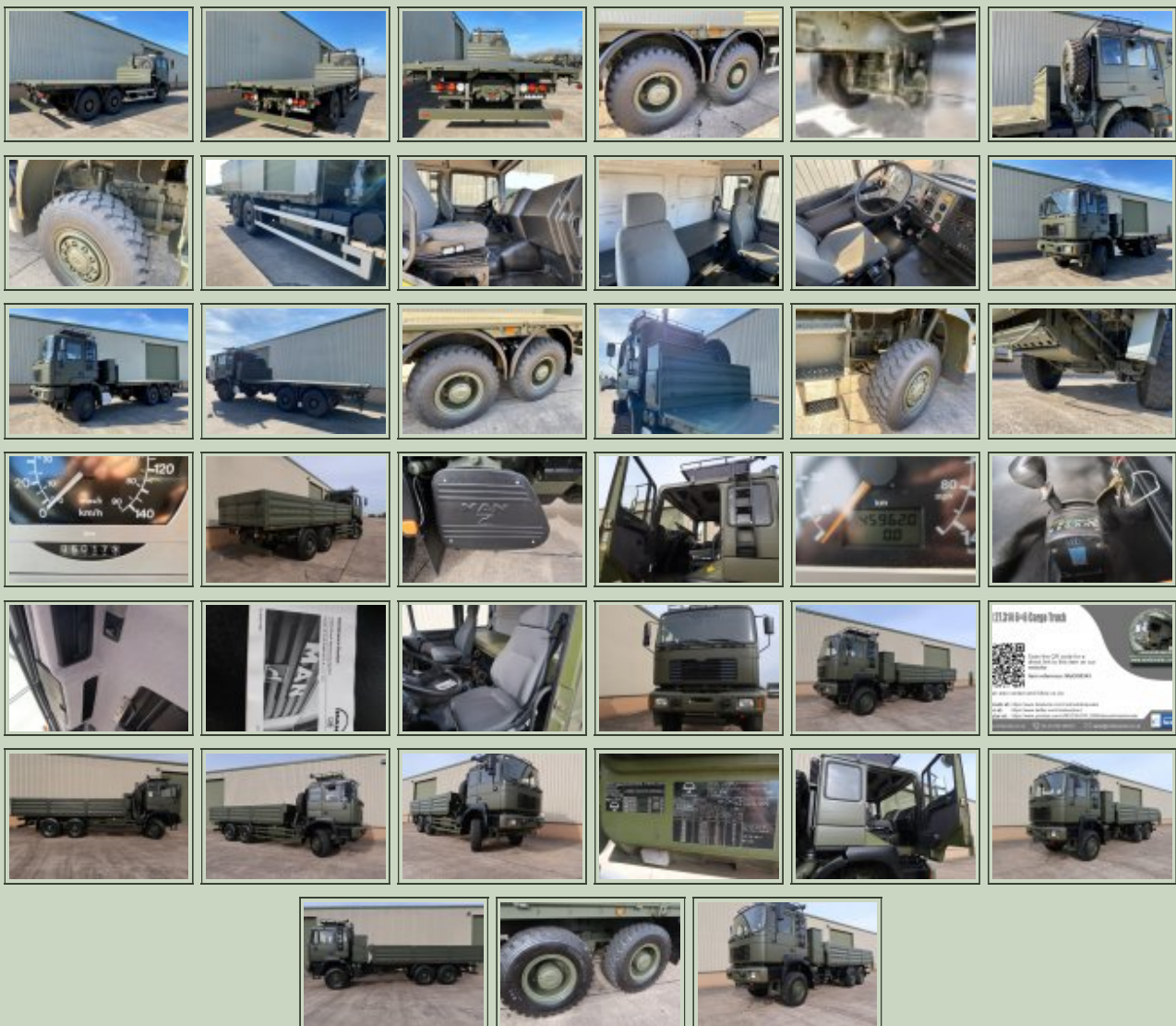
Engine	MAN 6-cylinder, type D2866 LF 34	Width	2.50 M
Gearbox	Automatic, ZF type 6 HP600 with retarder	GVW	24,000 kg
Brakes	Air over mechanical	Hrs_Kms	50,173 Km
Steering	LHD	Date into Service	
Tyres	365/85R20	Year of Manufacture	
Max Load		Qty Available	1
Electrics	24V	Export Requirements <a href="#">...more</a>	SIEL Licence Required



**REQUEST A QUOTE**

or call us on UK +44(0)1302-954007

### Photo Gallery



All prices quoted are GBP U.K. Pounds Sterling Ex. Works excluding VAT where applicable and shipping / associated costs.

Vehicles advertised are subject to remaining unsold.

All prices quoted are based on **"per individual unit"** purchased, any reductions on advertised price for multiple item orders is subject to negotiation and is conducted at the time of inspection or provision of LOI.

Photo's shown above may represent a vehicle type rather than an actual vehicle, vehicles are available serviced and painted to customers preference

An export licence may be required for items sold to customers outside of the U.K.

**FOR MORE INFORMATION ON EXPORT LICENCING PROCEDURES**

**[CLICK HERE](#)**

**FOR INFORMATION ON CURRENT EU EMBARGOES**

**[CLICK HERE](#)**