

# MOD / NATO Disposals

ilitary vehicles and equipment for sale

[www.modsurplus.co.uk](http://www.modsurplus.co.uk)

Tel: +44 (0)1302-954007

[Return to Homepage](#) | E-Mail: [sales@modsurplus.co.uk](mailto:sales@modsurplus.co.uk)



REQUEST A QUOTE

or call us on UK +44(0)1302-954007

## Description / Ref

MAN HX60 18.330 4x4 Cargo Winch Truck - 50326

Photo (a gallery of photos is provided below - where available)



## Details

MAN HX60 18.330 4x4 Cargo Winch Truck

Direct from the military these are the latest current in service cargo vehicles used by the military today

Drop side cargo body with canopy

Fitted with a Rotzler HZ051 Hydraulic winch

Puling force 70Kn (7,100 Kg)

Rope diameter 14mm

Operated by a hand held control unit

Can be used from the front or rear of the vehicle

**Specification: -**

- Configuration: 4x4
- Payload: 6 Tons
- Steel leaf spring suspension
- Seats: Driver and two crew air operated
- Air Conditioned Cabin
- Cab roof hatch
- Tilt cab
- Heated mirrors
- Cruise control
- EBS & ABS braking system
- (EVB) Exhaust valve brake
- Hill start brake
- Temperature and time display
- Front and rear diff locks and interaxle lock
- Rear Nato tow hitch, air fittings and lighting socket
- New Spare wheel
- On board tyre inflation system
- Heavy duty steel body fitted with lashing tie down points as well as a ISO container twist locks. Length 14' width 7'5"
- 2x Side stowage tool boxes
- 2x Fire extinguisher boxes
- GVW: 18,000Kg
- Axle 1: 9,100Kg
- Axle 2: 10,250Kg
- Unladen weight: 9,200Kg
- Body length: 5.1M
- Fully wax oiled chassis

These vehicles have been built to the highest standard and are available today from our stock.

We also have other models of the MAN HX60 in stock to include drop side cargo models with canopy, troop carriers, flat bed, and crane trucks

We are experiencing a lot of enquiries for these chassis for use as the base for expedition overland vehicles and we are fortunate enough to have a stock available so whether you are seeking to buy one of the trucks and build your own body or if you want the chassis with a basic empty (dry freight) body or even a complete build then get in touch with us.

Fleet and Governmental orders welcome, [Click Here for More](#)

**Videos (if available)**

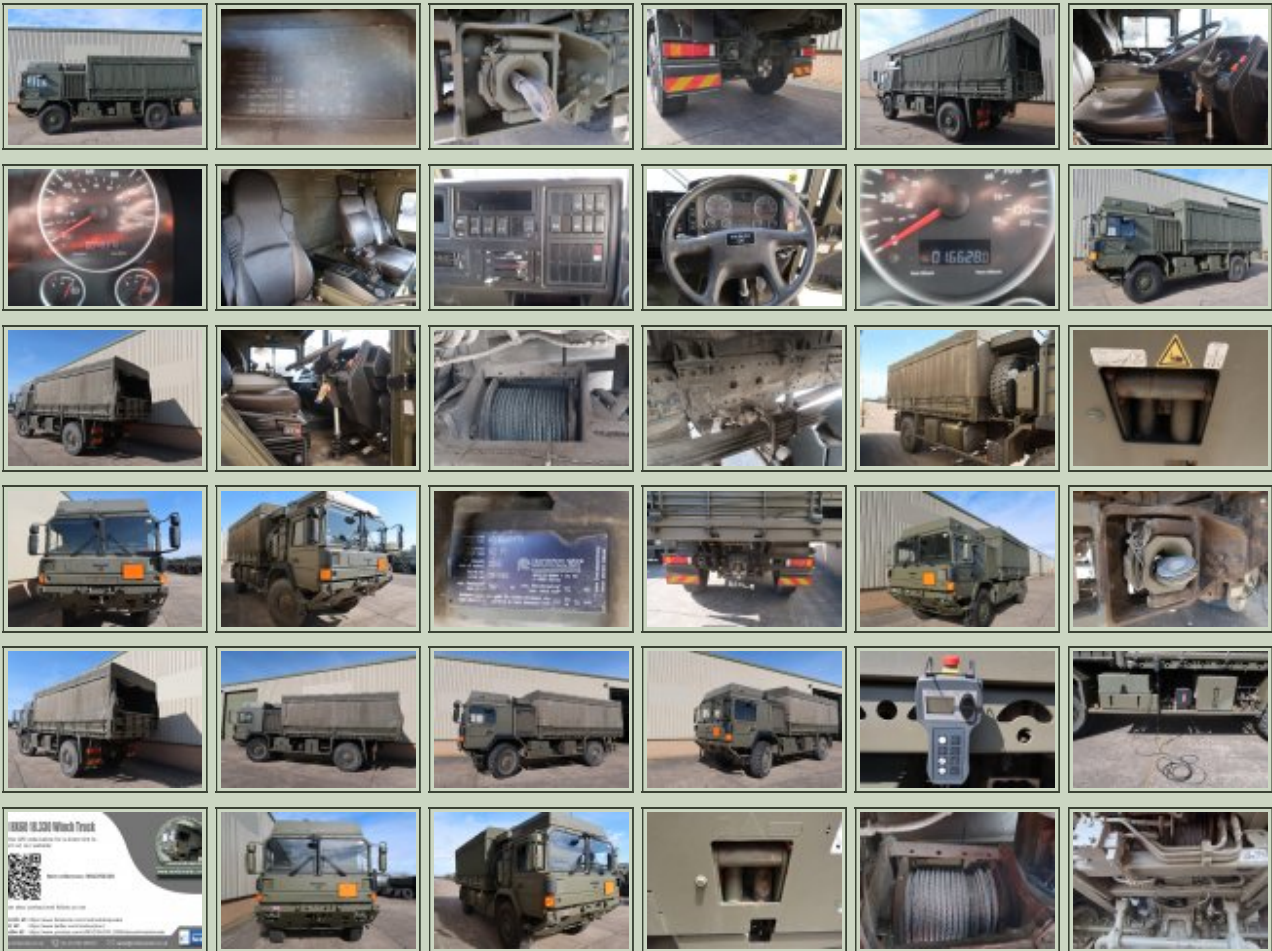
Category	Winch Trucks	Length	7.90m
Manufacturer	MAN	Height	3.50m
Engine	MAN D0836 LFG50 326HP 6 Cyl Euro 4	Width	2.50m
Gearbox	ZF AS 1210 Automatic	GVW	18,000kms
Brakes	Electronically controlled, dual circuit, air operated	Hrs_Kms	10,000 - 40,000kms
Steering	PAS RHD	Date into Service	2010
Tyres	14.00R20	Year of Manufacture	2010
Max Load	6,000kg	Qty Available	10
Electrics	24v	Export Requirements <a href="#">...more</a>	SIEL



**REQUEST A QUOTE**

or call us on UK +44(0)1302-954007

## Photo Gallery



All prices quoted are GBP U.K. Pounds Sterling Ex. Works excluding VAT where applicable and shipping / associated costs.

Vehicles advertised are subject to remaining unsold.

All prices quoted are based on **"per individual unit"** purchased, any reductions on advertised price for multiple item orders is subject to negotiation and is conducted at the time of inspection or provision of LOI.

Photo's shown above may represent a vehicle type rather than an actual vehicle, vehicles are available serviced and painted to customers preference

An export licence may be required for items sold to customers outside of the U.K.  
**FOR MORE INFORMATION ON EXPORT LICENCING PROCEDURES**

[CLICK HERE](#)

**FOR INFORMATION ON CURRENT EU EMBARGOES**

[CLICK HERE](#)