

MOD / NATO Disposals

Military vehicles and equipment for sale

www.modsurplus.co.uk

Tel: +44 (0)1302-954007

[Return to Homepage](#) | E-Mail: sales@modsurplus.co.uk



REQUEST A QUOTE

or call us on UK +44(0)1302-954007

Description / Ref

Chieftain Drawbar Plant Trailer - 50162

Photo (a gallery of photos is provided below - where available)



Details

Just arrived into stock choice of two Chieftain plant trailers.

Both units are in excellent condition with very little use.

One trailer has standard front headboard and the second unit is fitted with front ramps to allow for loading onto the deck of the vehicle towing the trailer.

Steel checker plate deck

Lashing shackles in deck

Sprung loaded ramps

Tested and plated for UK road use

Videos (if available)

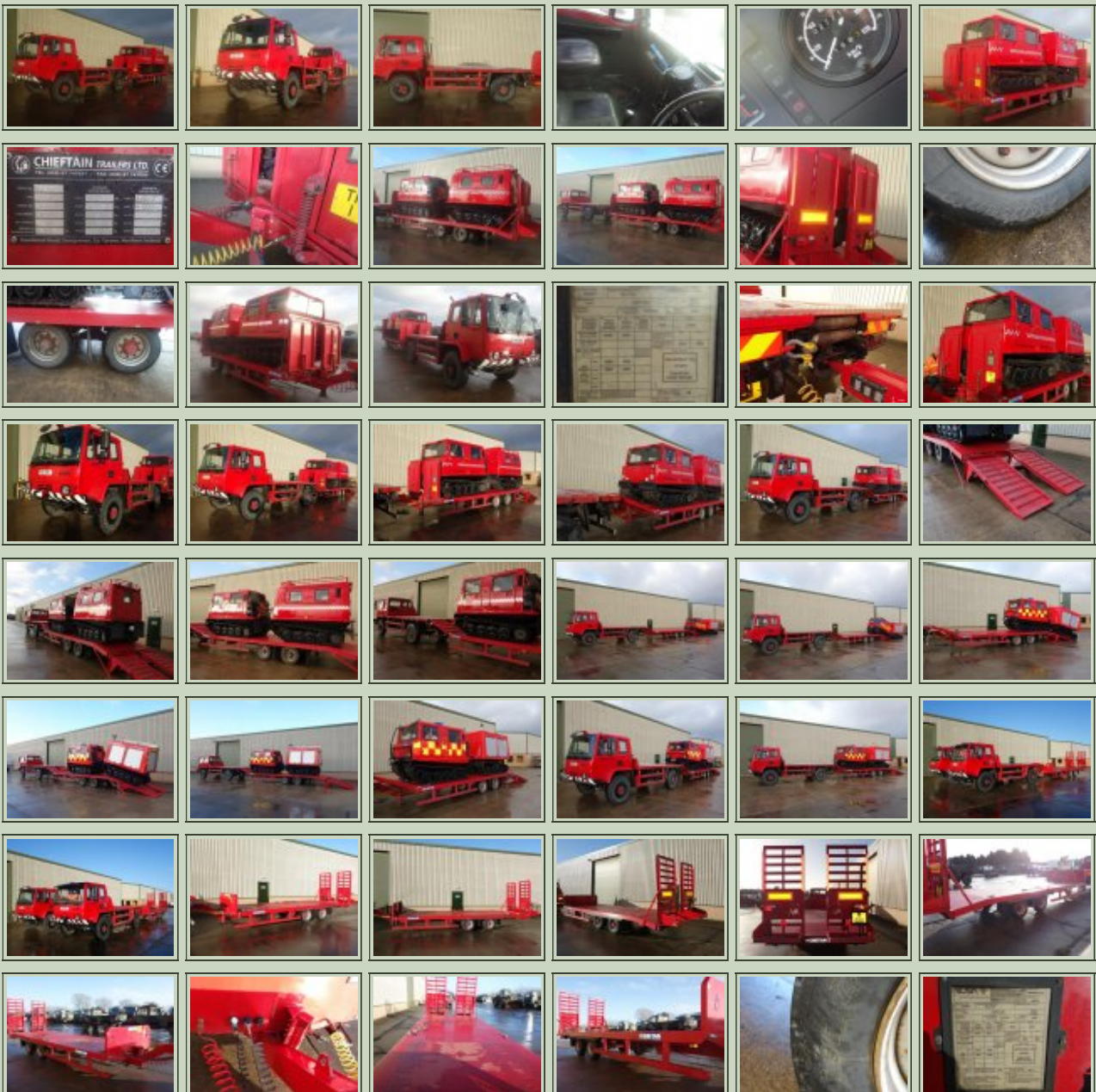
Category	Low Loader Trailers	Length	9.2 M
Manufacturer	Chieftain	Height	2.7 M
Engine		Width	2.3 M
Gearbox		GVW	8,800 kg's
Brakes		Hrs_Kms	
Steering		Date into Service	
Tyres		Year of Manufacture	2008
Max Load		Qty Available	1
Electrics	24V	Export Requirements ...more	NLR (No Licence Required)



REQUEST A QUOTE

or call us on UK +44(0)1302-954007

Photo Gallery





■
All prices quoted are GBP U.K. Pounds Sterling Ex. Works excluding VAT where applicable and shipping / associated costs.

■
Vehicles advertised are subject to remaining unsold.

■
All prices quoted are based on **"per individual unit"** purchased, any reductions on advertised price for multiple item orders is subject to negotiation and is conducted at the time of inspection or provision of LOI.

■
Photo's shown above may represent a vehicle type rather than an actual vehicle, vehicles are available serviced and painted to customers preference

■
An export licence may be required for items sold to customers outside of the U.K.
FOR MORE INFORMATION ON EXPORT LICENCING PROCEDURES

[CLICK HERE](#)

FOR INFORMATION ON CURRENT EU EMBARGOES

[CLICK HERE](#)