

# MOD / NATO Disposals

ilitary vehicles and equipment for sale

[www.modsurplus.co.uk](http://www.modsurplus.co.uk)

Tel: +44 (0)1302-954007

[Return to Homepage](#) | E-Mail: [sales@modsurplus.co.uk](mailto:sales@modsurplus.co.uk)



REQUEST A QUOTE

or call us on UK +44(0)1302-954007

## Description / Ref

King drawbar plant trailer - 40104

Photo (a gallery of photos is provided below - *where available*)



## Details

King draw bar plant trailer. This trailer is a twin axle close coupled platform construction with air suspension, two line load sensed braking with ABS.

A manually operated 5,000 kg recovery winch is fitted to the front of the trailer, along with manual operated spring loaded ramps. Trailers are fitted with ISO container twist locks, shackles and loading rings for load security.

The trailer suspension comprises two air bags and two shock absorbers mounted on each of the two SAF axles.

Ride height of the trailer is adjustable by increasing/decreasing the amount of air within each air bag. Adjustment is carried out via a suspension raise/lower valve mounted on the trailer.

- Maximum gross trailer weight: 18,000 kg's
- Maximum permissible axle weight: 9,000 kg's
- Maximum permissible payload 12,650 kg's

- **Dims on plate overall**
- Plus flat bed dims 6.10x plus slope 1.12 m Ramp length 3 m
- 7 lash points per side
- Twist locks for 20 ft cont
- Deck Heigh from ground 90cm

Videos (if available)

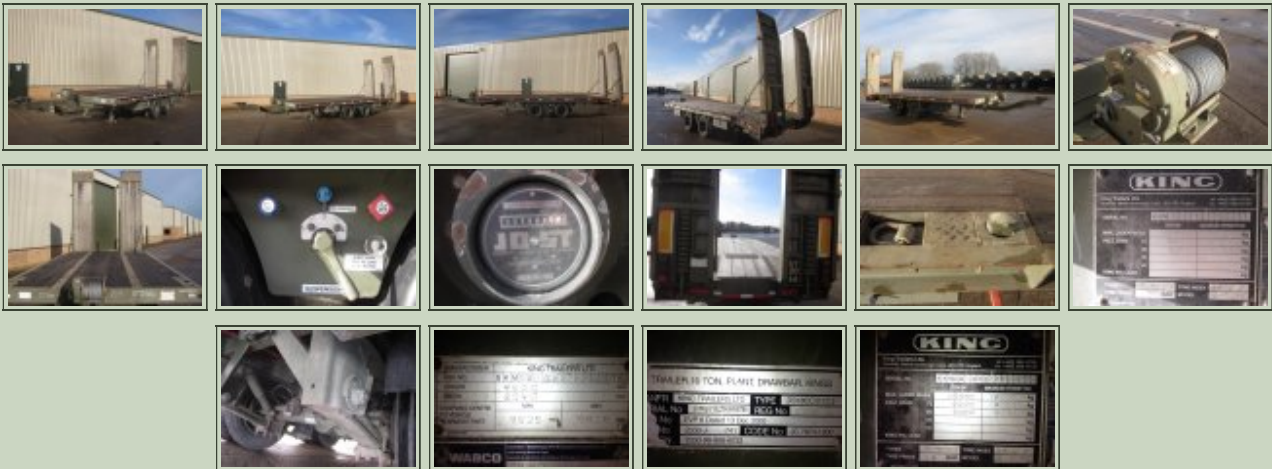
Category	Low Loader Trailers	Length	9.6m
Manufacturer	King	Height	3.50m (Ramps)
Engine		Width	2.54m
Gearbox		GVW	
Brakes		Hrs_Kms	
Steering		Date into Service	
Tyres		Year of Manufacture	2001
Max Load	12650 kg's	Qty Available	5
Electrics	24 V	Export Requirements <a href="#">...more</a>	



REQUEST A QUOTE

or call us on UK +44(0)1302-954007

## Photo Gallery



All prices quoted are GBP U.K. Pounds Sterling Ex. Works excluding VAT where applicable and shipping / associated costs.

Vehicles advertised are subject to remaining unsold.

All prices quoted are based on **"per individual unit"** purchased, any reductions on advertised price for multiple item orders is subject to negotiation and is conducted at the time of inspection or provision of LOI.

Photo's shown above may represent a vehicle type rather than an actual vehicle, vehicles are available serviced and painted to customers preference

An export licence may be required for items sold to customers outside of the U.K.

**FOR MORE INFORMATION ON EXPORT LICENCING PROCEDURES**

[CLICK HERE](#)

FOR INFORMATION ON CURRENT EU EMBARGOES

[CLICK HERE](#)